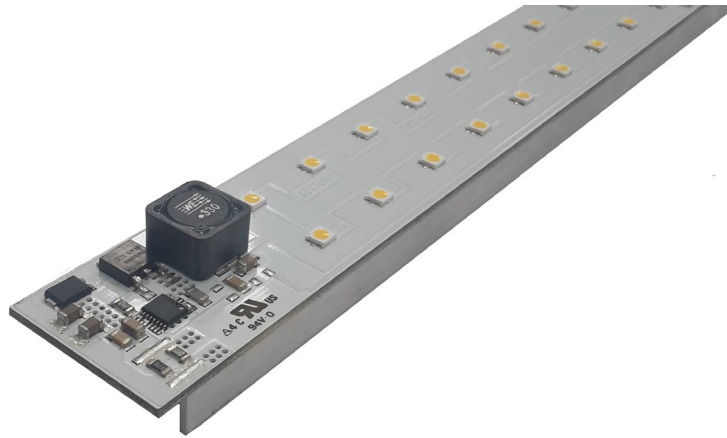


DATA SHEET TUBE PCB LED LAMPS SERIES



Middle power high brightness led lamps

- Six different lengths available.
- On board tripolar terminal block for +24 Vdc power supply and 0:10V regulation bus connection or tripolar cable 10 cm or 50cm long with M8 male connector.
- Colour temperatures available for white led 3500K, 4000K, 5700K.
- Led colours available, Red, Amber Yellow, Green, Blue.
- On-board driver available with 350mA, 500mA, 750mA, 1050mA, 1400mA, 1580mA, 2000mA, 2150mA currents, fixed or adjustable with 0:10V regulation bus.
- Protected PCB version available with resin coating.
- Room temperature 25° C.
- Compliance with EN 62471:2008-09 group 0.
- CE Marking.

Model	Dimensions (mm)	Led number	Max power (W)	Lux with driver 1580mA at:		
				100cm	150cm	200cm
TMP035xxxxxxxxxxx	350 x 29 x 23 max	36	15	430	200	120
TMP049xxxxxxxxxxx	490 x 29 x 23 max	54	22	640	310	190
TMP063xxxxxxxxxxx	630 x 29 x 23 max	72	29	860	420	260
TMP077xxxxxxxxxxx	770 x 29 x 23 max	90	37	1070	530	320
TMP091xxxxxxxxxxx	910 x 29 x 23 max	108	44	1270	620	380
TMP105xxxxxxxxxxx	1050 x 29 x 23 max	126	51	1500	740	450

For further information please ask us the complete product Data-Sheet

STARDUST ☆

IS A PRODUCT LINE UNDER THE OWNERSHIP OF BOSTON ELETTRONICA S.R.L.